

Booking Terms and Conditions

Full details of Booking Terms and Conditions can be found on our website www.shoalhavenlodge.com.au. The person making the booking and paying the deposit agrees to these Terms and Conditions for themselves and everyone staying in the accommodation or on the premises. Prices, information, booking terms & conditions are subject to change without notice.

Payment/Cancellation

A deposit is required at the time of booking. Monies paid (in advance or after arrival) and any amounts outstanding, are not refundable in the event of cancellation, 'no show', or early departure, unless we can rebook the accommodation for the same days, in which case an administration fee of \$50 will be charged.

General

- Unless otherwise arranged with Shoalhaven Lodge, no more than 6 people may stay in a lodge, 4 in the cottage, 2 in a luxury suite, and 2 in a studio apartment. (Adults and children over 2 years old).
- The accommodation must be left in a **clean and tidy condition** (e.g. Floor swept, no dirty dishes, saucepans etc. are to be left), otherwise an additional cleaning fee will be charged.
- All breakages, damage and destruction are the responsibility of the person making the booking and must be paid for prior to departure.
- Bond monies may be used at the discretion of Shoalhaven Lodge management to contribute towards **damage, loss, or extra cleaning** when the lodge is not left in a clean and tidy condition.
- No responsibility is taken for the personal property of any guest.
- No responsibility is taken for any accident resulting in injury or death of any guest whilst on the property, the river or its shores, or in watercraft.
- Guests will provide waterproof mattress protectors on beds if children are likely to wet the bed. A cleaning fee will be charged in the event of any accident.
- To respect the privacy of our guests, we do not cater for day visitors.
- Check-in time is 3.00pm and checkout time is 10.00am.
- Minimum bookings apply during Peak Periods.
- Persons under 18 will not be accepted as a guest without a parent permanently present..
- Strictly **no pets** allowed.
- No motorised vehicles are allowed on the property other than vehicles used for transport of persons and trailers used for their personal effects (including motorized boats).
- In the unlikely event that Shoalhaven Lodge has to cancel your booking a full refund will be given.

Map and Location (Just 12 minutes from Nowra)



- Travelling south from Sydney on the Princes Highway turn right into Kalandar Street at the 5th set of lights after the Shoalhaven River bridge.
 - Travel about 250 metres to a roundabout (Passing the cemetery on the left) and take the second exit from the roundabout into Albatross Road (follow the 'blue' sign for "Aviation Technology Park, Shoalhaven Campus").
 - Travel about 130 metres to a small roundabout and continue straight through for another 570 metres. Turn right into Yalwal Road (Note that Shoalhaven Lodge is shown on the blue tourist signs) and you have about 10km to go.
 - Proceed along Yalwal Road for 5.2km and then turn right into Longreach Road (Note that Shoalhaven Lodge is shown on the blue tourist signs).
 - Travel along Longreach Road and after a little over 3km you will see a sign for Binnaburra Park Road on the left.
- Stay on Longreach road** for just over 1km and you will find Shoalhaven Lodge on the right hand side.
- Proceed down the driveway approximately 700 metres and call in at the house/reception.



Shoalhaven River Premier 4½ Star Accommodation

A Short drive to the beautiful beaches of Jervis Bay and 12 minutes from Nowra, Shoalhaven Lodge offers almost 1kilometre of absolute waterfront, self contained accommodation in luxury chalet-style lodges tucked away in an idyllic, quiet, 100 acre rural property. Each lodge is set well apart to allow guests freedom and privacy and accommodates couples, families or groups. All have sunny verandahs and magnificent Shoalhaven River, escarpment, and mountain views. There is abundant fauna and flora, park-like acres/picnic areas, private bush walks, private beach for swimming and a boat ramp. Perfect for long holidays, romantic escapes and short breaks any time of the year. A 'piece of heaven' that will not disappoint.

“Winner of the Award of Distinction of the South Coast Tourism Awards For Excellence”

**Contact: Alan and Claire Lawrence
02 4422 6686**

www.shoalhavenlodge.com.au
info@shoalhavenlodge.com.au

Minimum Stay (Off Peak and Weekends)

- Lodges 2 nights
- Studio Apartments 1 night
- Cottage 1 night

Additional Persons

- Per person - \$40 per night
- Children 2-12 years - \$20 per night
- Children under 2 years - no charge, unless using a bed, then \$20 per night

Linen and Towels

- All bed linen included
- Towels are **not provided** except for Luxury Suites and Studio Apartments. If you forget, towels can be hired for \$2 each
- No room service
- Bring own beach towels

Prices Include Free Use Of

- Boat ramp, Gas BBQ, Cot

Credit Card Payments

- Credit card payments - 3% surcharge

Security Bond

- A bond is payable for weddings, group bookings or stays of 3 nights or more

Peak Periods

- December, January, school holidays and long weekends

Prices Per Night

Accommodation	Number of Bedrooms	Monday to Thursday (Off Peak)	Monday to Thursday (Peak)	Friday to Sunday
Grevillea, Banksia & Waratah Lodges	3 bedrooms, sleeps 6	\$315	\$375	\$375
The Cottage	2 bedrooms, sleeps 4	\$265	\$290	\$290

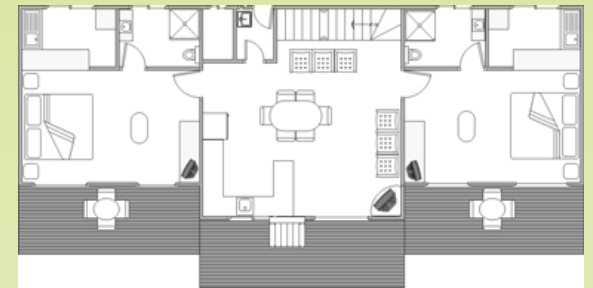
Luxury Suite	1 bedroom, sleeps 2	\$180	\$210	\$210
---------------------	---------------------	-------	-------	-------

Studio Apartment	1 bedroom, sleeps 2	\$150	\$150	\$150
-------------------------	---------------------	-------	-------	-------

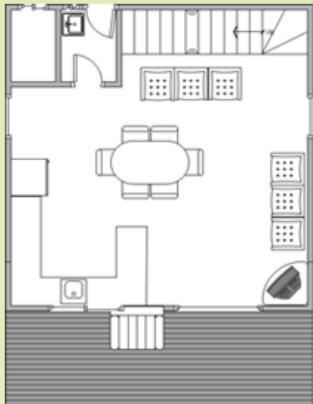
Waratah Lodge (Downstairs/Upstairs)



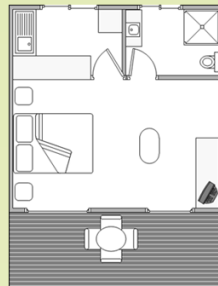
Banksia Lodge (Downstairs/Upstairs)



Luxury Suite (Downstairs/Upstairs)



Studio Apartment



The Cottage

